

CLIMATE CONTROL SOLUTION  
Red Dot **Refuse Collection**



**A/C SYSTEMS FOR**

# REFUSE VEHICLES

**EXTREME ENVIRONMENT**

**R-9715**

The highest-capacity headliner A/C unit we make, the R-9715 is ideal for big interiors where appearance is important, including shuttle vehicles, buses, and fire trucks. An electric water pump can be used with tilt cabs or extremely humid conditions.

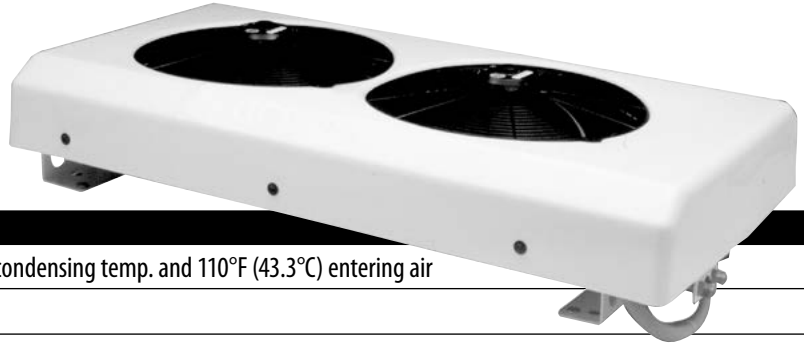


**SPECIFICATIONS**

<b>BTU'S</b>	Cooling – 39,500 BTU/Hr with 36°F (11.6 kW with 2.2°C) refrigerant temp. and 80°F (26.7°C) wet bulb entering air
<b>AIR FLOW</b>	577 CFM (980 m3/h)
<b>WEIGHT</b>	40 lbs. (18 Kg)
<b>CURRENT DRAW</b>	26.3 amps @ 13.6 VDC (includes 4 amps for A/C clutch)

**R-4500**

Our largest “power” condenser, the R-4500 is a dual-fan unit with the capacity needed for high-performance evaporators and dual-evaporator systems. Available with a low-profile conversion kit.



**SPECIFICATIONS**

<b>CAPACITY</b>	45,200 BTU/hr. @ 135°F (13.2 kW @ 57.2°C) condensing temp. and 110°F (43.3°C) entering air
<b>WEIGHT</b>	85 lbs. (38.6 kg)
<b>AIR FLOW</b>	2,011 CFM (3,517 m3/h)
<b>MOTORS</b>	Two 16-inch diameter
<b>CURRENT DRAW</b>	30.3 amps @ 13.6 VDC
<b>MODEL</b>	R-4500-8P (12 VDC)

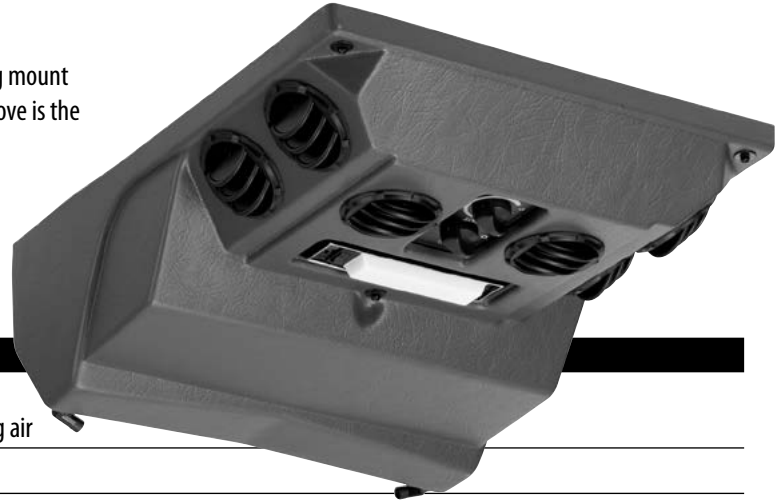
**R-9715 / R-4500 SYSTEM ORDERING GUIDE**

<b>UNITS</b>	R-9715-11P	12 VDC - replaces R-9715-10P	
<b>CONDENSER</b>	R-4500-8P Remote Mount	12 VDC	
<b>INSTALLATION KIT</b>	78R1025	Rooftop Condenser	ATCO version
	78R1027	Front mount condenser	E-Z Clip version
	78R1070	Front mount condenser	ATCO version
<b>COMPRESSOR</b>	Consult your Red Dot “All-Makes” catalog		
<b>COMPRESSOR MOUNT KIT</b>	Consult your Red Dot “All-Makes” catalog		
<b>DUAL PUMP KIT</b>	RD-2-3825-0P		

## R-2000

The compact, low profile design of the R-2000 allows an out of the way ceiling mount in virtually any vehicle. The high output of ice cold air blowing down from above is the ultimate in driver comfort.

The R-2000 can be installed facing any direction that best suits the particular application. Not only does this air conditioner make a perfect installation in cabs where space is a problem it is also an effective auxiliary cooling unit in vans, motor homes and small delivery vehicles.



### SPECIFICATIONS

<b>BTU'S</b>	Cooling – 17,000 BTU/Hr w/36°F (5 kW w/ 2.2°C) refrigerant temp. and 80°F (26.7°C) wet bulb entering air
<b>AIR FLOW</b>	235 CFM (400 m3/h)
<b>WEIGHT</b>	24 lbs. (11 kg)
<b>CURRENT DRAW</b>	18.5 amps @ 13.6 VDC (includes 4 amps for A/C clutch)
<b>CONTROLS</b>	Three speed fan, adjustable thermostat

## R-6160

The R-6160 is the perfect rooftop condenser design. A light weight, compact, and high capacity unit with a styled low profile that fits the aerodynamic vehicle designs of today. This is a must for effective air flow and when roof space is minimal or air shields are used.



### SPECIFICATIONS

<b>CAPACITY</b>	24,000 BTU's/hr (7 kW @ 65.5°C)
<b>WEIGHT</b>	23 lbs. (10.5 kg) Lightweight
<b>CONDENSER COIL</b>	The coil is aluminum fin and copper tube construction, which includes a tube of .022" (6 cm) wall thickness, results in an effective, lightweight rugged coil.
<b>MOTOR/FAN</b>	The motor is a permanent magnet type selected for its extended life. The fan is made of aluminum.
<b>CURRENT DRAW</b>	12 amps @ 13.6 VDC (includes 4 amps for A/C clutch)

### R-2000 / R-6160 SYSTEM ORDERING GUIDE

<b>UNIT</b>	R-2000-11P	12 VDC
<b>CONDENSER</b>	R-6160-0P - Roof Mount	
<b>INSTALLATION KIT</b>	78R1027	
<b>COMPRESSOR</b>	Consult your Red Dot "All-Makes" catalog	
<b>COMPRESSOR MOUNT KIT</b>	Consult your Red Dot "All-Makes" catalog	
<b>ROOF BRACING</b>	RD-5-8476-0P	

**EASY INSTALLATION**



**R-6100**

The R-6100 is the ultimate rooftop air conditioner design. Red Dot went the extra mile in designing a lightweight, high capacity unit with a styled low profile that fits the aerodynamic truck designs of today. Notice the sloping front that rides comfortably over center marker lights. This is a must when roof space is minimal or air shields are used.

A low profile plenum protrudes barely 1½" into the cab and blends easily into the headliner leaving ample head room. Frigid, high-velocity air can be directed 360° through the large diffusers located directly below the double blowers. Also featured is a cab air filter incorporated into the plenum.



*Low profile ceiling plenum blends with any interior.*

**SPECIFICATIONS**

<b>BTU'S</b>	Cooling –16,000 BTU/Hr with 36°F (4.7 kw with 2.2°C) refrigerant temp. and 80°F (26.7°C) wet bulb entering air
<b>AIR FLOW</b>	265 CFM (450 m3/h)
<b>WEIGHT</b>	44 lbs. (20kg)
<b>CONDENSER COIL</b>	The coil is aluminum fin and copper tube construction. This material selection, which includes a tube of .022" (6 cm) wall thickness, results in an effective, lightweight, and rugged coil.
<b>CONDENSER MOTOR/FAN</b>	The motor is a permanent magnet type selected for its extended life. The motor is sealed and a slinger ring and hub cap added for weather protection. The fan is aluminum with a heavy duty spider and riveted blades.
<b>CURRENT DRAW</b>	33 amps @ 13.6 VDC (includes 4 amps for A/C clutch)
<b>CONTROLS</b>	Three speed blower and adjustable thermostat

**R-6100 SYSTEM ORDERING GUIDE**

<b>UNIT</b>	R-6100-4P	12 VDC
<b>CONDENSER</b>	Contained in R-6100 unit	
<b>INSTALLATION KIT</b>	78R1505	
<b>COMPRESSOR</b>	Consult your Red Dot "All-Makes" catalog	
<b>COMPRESSOR MOUNT KIT</b>	Consult your Red Dot "All-Makes" catalog	
<b>OPTIONS</b>	Bug Screen:	RD-4-4529-1P
	Winter Cover:	RD-5-4718-0P
	Universal Roof Mount Kit:	RD-2-1302-0P (Relocates unit mounting bolts to pick up integral roof bracing)

Distributed by