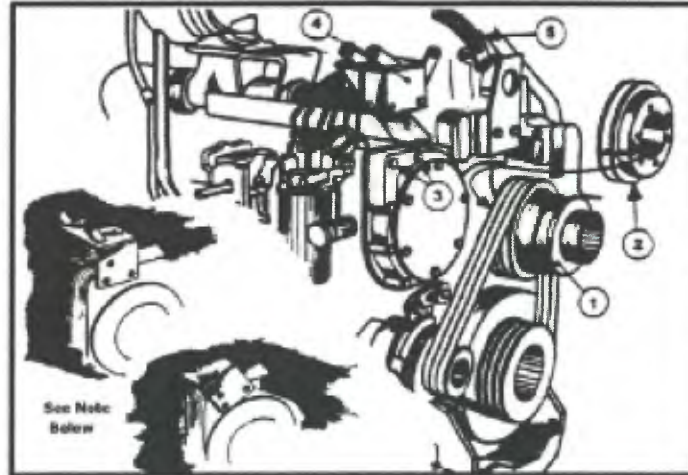


## Red Dot A/C Compressor Mount Kit

**75R9973**

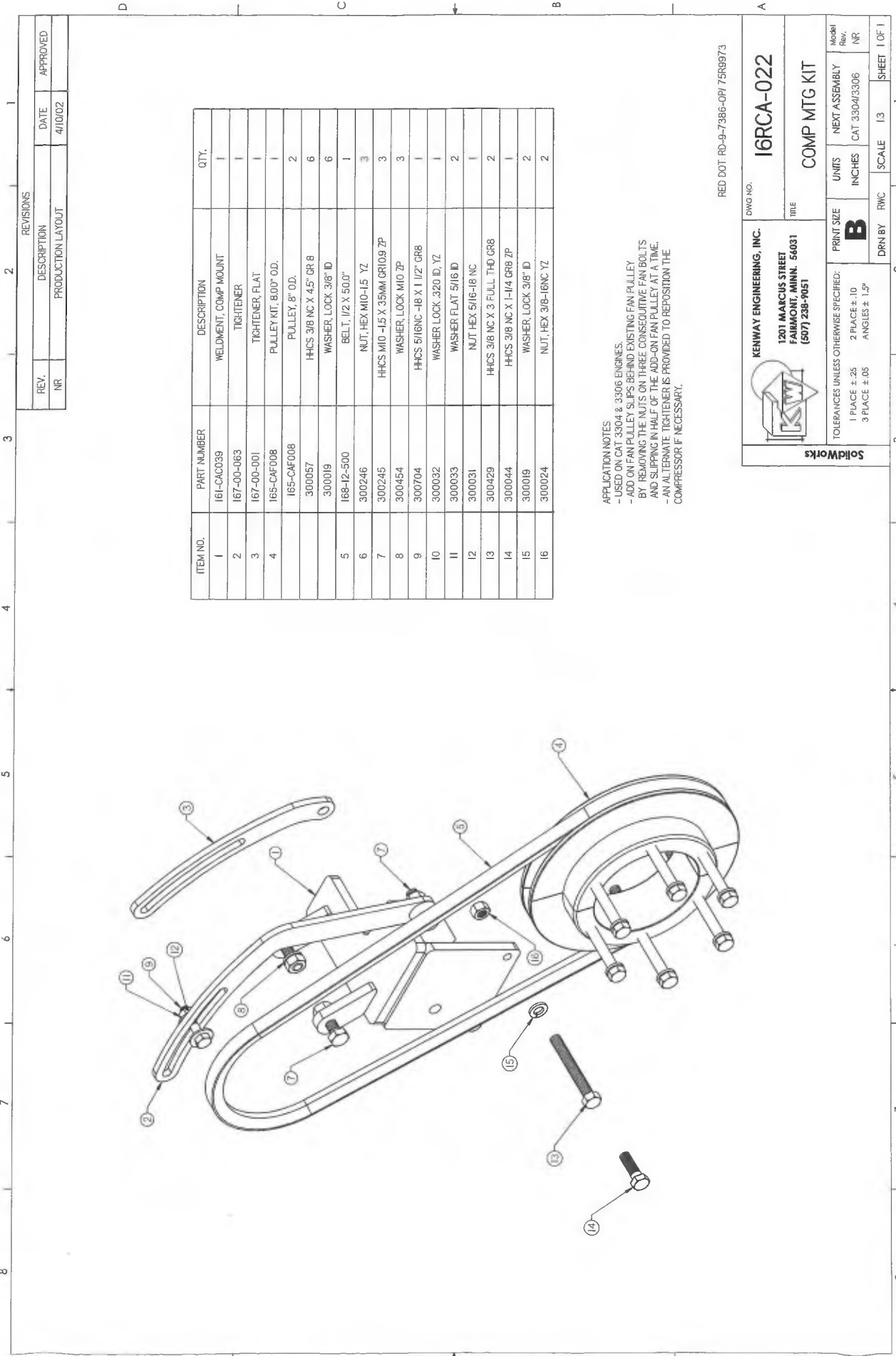
**Cat 3304 & 3306**



1. Remove the fan guard.
2. Remove three of the six (3/8 x 3 1/2" bolts from the pulley assembly (See #1), then add 1/2 of the split pulley (See #2) to the backside of the pulley group. No rotate the fan 1/2 way around and install the other half of the split pulley (See #2). Be sure the surface of the pulley is clean and flat so that the pulley will spin true and not wobble. Bolt the pulleys together with six (3/8 x 4 1/2") bolts from the kit.
3. Remove the top two bolts (See #3) from the fuel injector housing and place the mounting bracket (See #4) over the housing. Fit the bolt that is welded on the mount into the corresponding hole on the housing. Replace the bolts removed from the housing with a longer 3/8" bolt provided in the kit.
4. Place the drive belt over the new add-on pulley and then the other belts can be replaced. Reassemble the fan guard.
5. Fasten the tightener bracket (See #5) to the ear on the mount bracket using a 5/16" x 1 1/2" bolt with nut, lockwasher and flatwasher. Do not tighten at this time. Bolt the compressor to the mount bracket using the metric 10 x 35mm bolts with nuts and lockwashers. Now attach the slotted end of the tightener bracket to an ear on the compressor groove that best lines up with the drive pulley. Adjust the belt to its proper tension and tighten the metric bolts that are fastening the compressor to the mount bracket.

**(NOTE: Mount may require tilting for clearance of fuel filter.)**

RD.9.7386.OP



ITEM NO.	PART NUMBER	DESCRIPTION	QTY.
1	161-CAC039	WELDMENT, COMP MOUNT	1
2	167-00-063	TIGHTENER	1
3	167-00-001	TIGHTENER, FLAT	1
4	165-CAF008	PULLEY KIT, 8.00" O.D.	1
	165-CAF008	PULLEY, 8" O.D.	2
	300057	HHCS 3/8 NC X 4.5" GR 8	6
	300019	WASHER, LOCK 3/8" ID	6
5	168-12-500	BELT, 1/2 X 50.0"	1
6	300246	NUT, HEX M10-1.5 YZ	3
7	300245	HHCS M10 -1.5 X 35MM GR10.9 ZP	3
8	300454	WASHER, LOCK M10 ZP	3
9	300704	HHCS 5/16NC -18 X 1 1/2" GR8	1
10	300032	WASHER, LOCK .320 ID, YZ	1
11	300033	WASHER, FLAT 5/16 ID	2
12	300031	NUT, HEX 5/16-18 NC	1
13	300429	HHCS 3/8 NC X 3 FULL THD GR8	2
14	300044	HHCS 3/8 NC X 1-1/4 GR8 ZP	1
15	300019	WASHER, LOCK 3/8" ID	2
16	300024	NUT, HEX 3/8-16NC YZ	2

APPLICATION NOTES  
 -USED ON CAT 3304 & 3306 ENGINES.  
 -ADD ON FAN PULLEY SLIPS BEHIND EXISTING FAN PULLEY  
 BY REMOVING THE NUTS ON THREE CONSECUTIVE FAN BOLTS  
 AND SLIPPING IN HALF OF THE ADD-ON FAN PULLEY AT A TIME.  
 -AN ALTERNATE TIGHTENER IS PROVIDED TO REPOSITION THE  
 COMPRESSOR IF NECESSARY.

REV. NR		REVISIONS	
		DESCRIPTION	DATE
		PRODUCTION LAYOUT	4/10/02
			APPROVED

RED DOT: RD-9-7386-0P/75R9973

DWG NO. **16RCA-022**

**KENWAY ENGINEERING, INC.**  
 1201 MARCUS STREET  
 FAIRMONT, MINN. 56031  
 (507) 238-9051

TITLE: **COMP MTG KIT**

Model No. NR  
 Part No. CAT 3304/3306 NR

PRINT SIZE: **B**  
 UNITS: INCHES  
 NEXT ASSEMBLY: CAT 3304/3306

DRN BY: RWC  
 SCALE: 1:1  
 SHEET 1 OF 1

TOLERANCES UNLESS OTHERWISE SPECIFIED:  
 1 PLACE ±.25  
 2 PLACE ±.10  
 3 PLACE ±.05  
 ANGLES ± 1.5°

**SolidWorks**