

75R9410



# John Deere Wheel Loader Compressor Mount For Kit 75R9410

John Deere Wheel Loader 624H (6068T)

## INSTALLATION INSTRUCTIONS

RD-9-7298-OP

### PARTS

| Qty | Description                          |
|-----|--------------------------------------|
| 1   | Compressor Mount Bracket             |
| 1   | Compressor Adjuster, M10x1.5         |
| 1   | Drive Belt, Gates 9555               |
| 1   | Screw Flange Hd. M16x2x50 Grade 10.9 |
| 2   | Screw M10x1.5x40 Grade 8.8           |
| 2   | Screw M10x1.5x45 Grade 8.8           |
| 2   | Screw M12x1.75x25 Grade 8.8          |
| 2   | Washer, Stamped- 1/4" Thick          |
| 3   | Nut, M10x1.5                         |
| 4   | Lock Washer, M10                     |
| 1   | Installation Instructions            |

**NOTE:** Auxillary drive pulley, John Deere part no R123413 is required and must be purchased seperately

### PROCEDURE

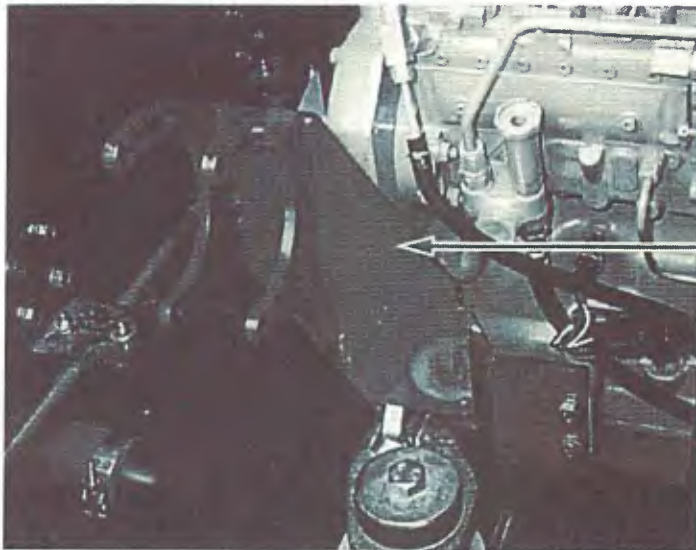
1. Attach auxillary drive pulley.
2. Remove bracket for intercooler line support if used. Remove top engine mount bolt. See figure 1.
3. Attach compressor mount to engine using two M12 screws and one M16 screw provided in kit. See figure 2.
4. Reattach intercooler line support if used, to back side of compressor mount using original hardware.
5. Loosely attach compressor to compressor mount as shown in figure 3.
6. Install drive belt on drive pulley and front compressor pulley. Insert 1/2" ratchet into square hole in compressor adjuster and properly tension belt. Tighten all compressor screws.



**Figure 1**

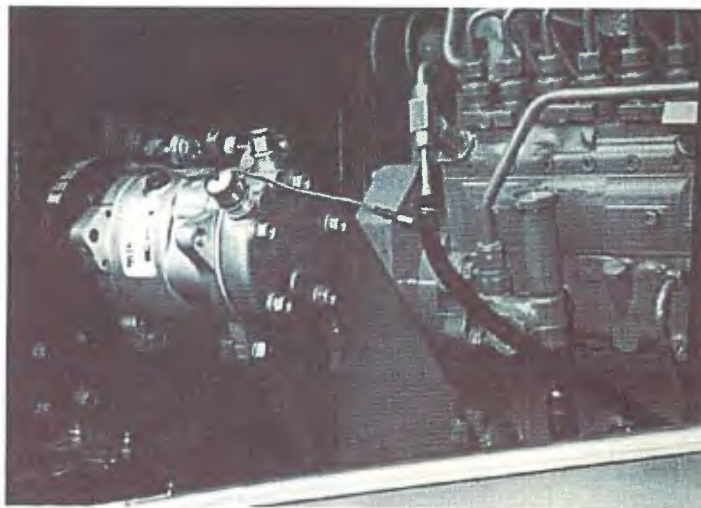
*Engine  
Mount bolt*

*Intercooler  
line support  
bolts*



**Figure 2**

*Installed  
Compressor  
Mount*



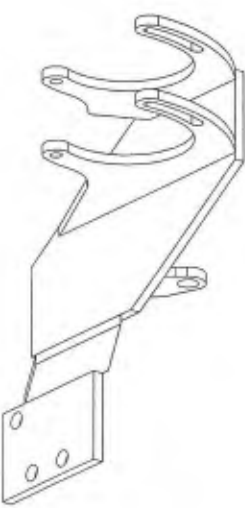
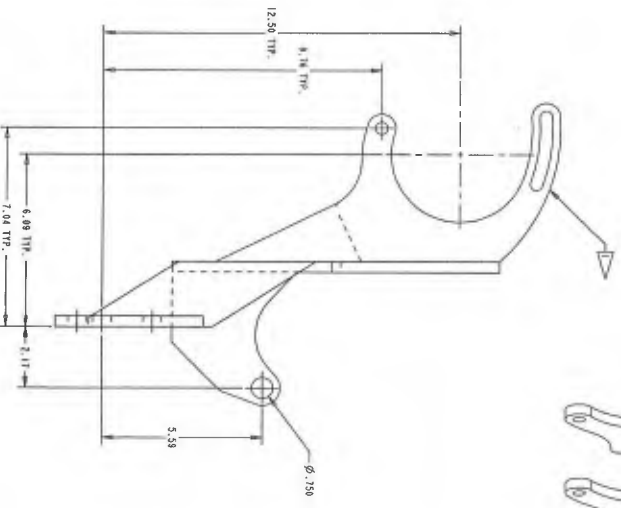
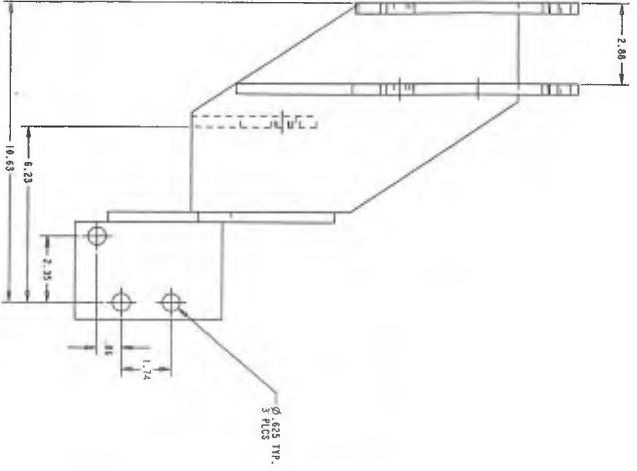
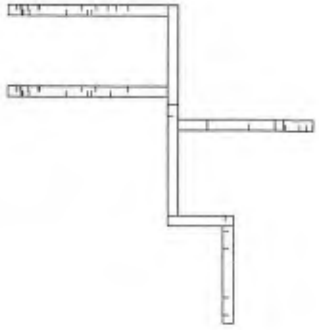
**Figure 3**



**RED DOT CORPORATION**

Aftermarket Office P.O.Box 88790 Seattle, WA 98138 (425) 251-6897 fax (425) 251-3934

| REV | DATE    | BY  | CHKD | APPD | REVISION  |
|-----|---------|-----|------|------|---|
| 1   | 7-2-58  | CMB | LJM  | SR   | INITIAL RELEASE (E8 14983)                                  |
| 2   | 7-25-59 | CMB | SR   | SR   | TOTAL BLK WGT. .09 INCH., .03 INCH., .010 INCH.; (E8 14983) |



NOTE:  
 ▷ .315 H.A.S.  
 ▷ PAINT SEMI-GLOSS BLACK  
 ▷ RAN MOHS BUILT FROM RD-9-9910

| QTY | ITEM    | PART NO. | DESCRIPTION               | MAT'L | FINISH |
|-----|---------|----------|---------------------------|-------|--------|
| 1   | C. 8018 | 7-2-58   | COMPRESSOR MOUNT - JD 624 |       |        |
| 1   | L. 8114 | 7-2-58   | H-10060                   |       |        |

SCALE: 0.500

RED DOT CORPORATION  
 1000 W. 10th St.  
 Springfield, MA 01103

THIS DRAWING IS UNCLASSIFIED THROUGHOUT UNLESS INDICATED OTHERWISE BY A DATE AND BY THE NAME OF THE OFFICE OR AGENCY WHICH DECLASSIFIED IT.

RD-9-7297-0

15R9410