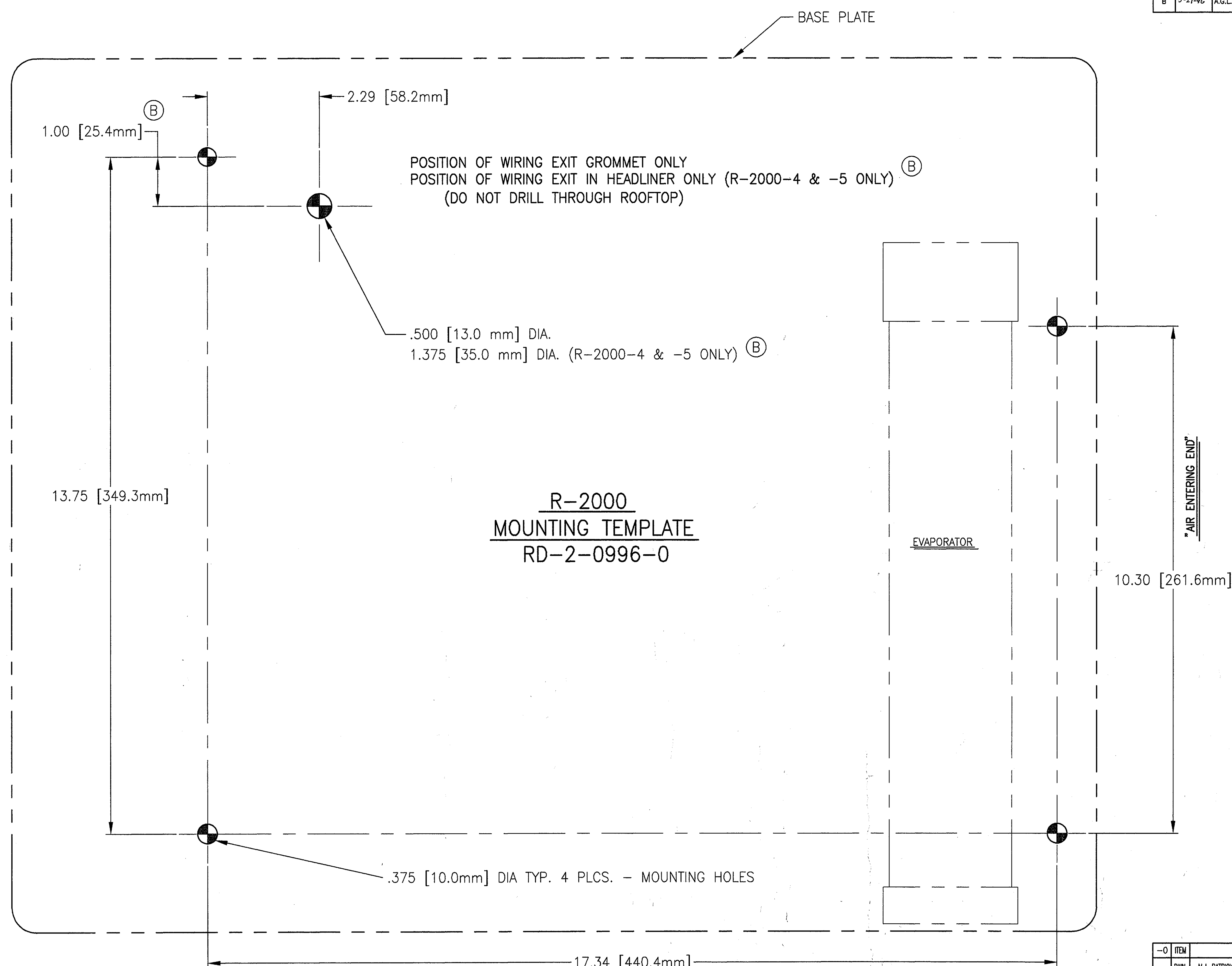


LTR	DATE	BY	CHK'D	PROD APPR	REVISION
A	3-20-95	BJD	DEA	K.M.	REDRAWN IN ACAD, SEE "BLACKLINE" FOR PREV. REV.; (OR 29833)
B	5-21-96	A.G.L.	JSM	<i>RMA</i>	ADDED 1.00 [25.4mm], 1.375 [35.0 mm] DIA. (R-2000-4 & -5 ONLY) & POSITION OF WIRING EXIT IN HEADLINER ONLY (R-2000-4 & -5 ONLY). (GE 00918)



**R-2000
MOUNTING TEMPLATE
RD-2-0996-0**

EVAPORATOR

"AIR ENTERING END"

1) "AIR ENTERING END" SHOULD BE PLACED IN DIRECTION DESIRED

NOTE:

-0	ITEM	PART NO.	DESCRIPTION	MAT'L	FINISH
DWN	M.J. PATRICK	2-2-78	TEMPLATE - MOUNTING		
CKD	KRUEGER	2-2-78	R-2000		
SCALE FULL SIZE			THIS PRINT IS PROPRIETARY INFORMATION LOANED SUBJECT TO RETURN UPON DEMAND AND IS NOT TO BE USED DIRECTLY OR INDIRECTLY IN ANY WAY DETRIMENTAL TO RED DOT CORPORATION.		
RED DOT CORPORATION 495 Andover Park East Seattle, WA 98188			NEXT ASSY R-2000	DWG. NUMBER RD-2-0996	SIZE SHEET D 1 OF 1